

ScissorLoc™ LP

FLOATING SYSTEMS

Aacer ScissorLoc LP offers a lower profile of Aacer's original floor system with the same excellent natural ventilation capabilities due to its intersecting solid wood subfloor component design. ScissorLoc LP is designed to withstand heavy loads while still providing a resilient and controlled playing surface.

Aacer's PowerVent™ Airflow system is a popular accompaniment to this system. It adds a feature which will detect moisture and start drying the system with mechanical airflow.



INFINITY
Wood Floors



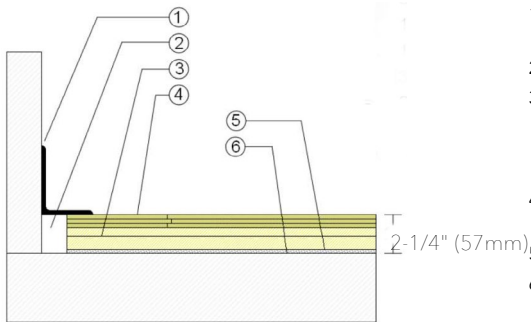
ScissorLoc™ LP

ScissorLoc™ LP provides an intersecting subfloor design for premium airflow and uniform play.



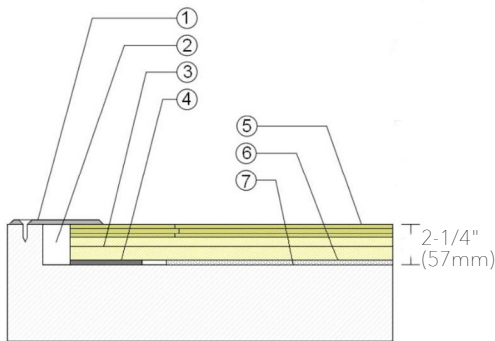
1. Infinity MFMA Maple
2. 1/2" x 5-1/2" (12mm x 140mm) Kiln-dried Pine Upper Subfloor
3. 3/4" x 5-1/2" (19mm x 140mm) Kiln-dried Pine Lower Subfloor
4. 1/4" (6mm) Performance Foam
5. 6mil Polyethylene Vapor Retarder
6. PowerVent Airflow System

WALL BASE



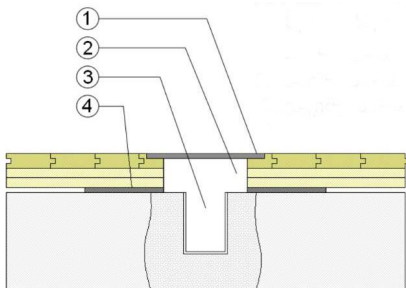
1. 3" x 4" (76mm x 101mm) Vent Cove Base
2. 1 1/2" (38mm) Min. Expansion Space
3. 1/2" x 5-1/2" (12mm x 140mm) Upper Pine
4. 3/4" x 5-1/2" (19mm x 140mm) Lower Pine
5. 25/32" (20mm) MFMA Maple Flooring
6. 1/4" (6mm) Resilient Foam Blanket
7. Vapor Retarder

THRESHOLD



1. 1/4" (6mm) Aluminum Threshold
2. 1 1/2" (38mm) Min. Expansion Space
3. 1/2" x 5-1/2" (12mm x 140mm) Upper Pine
4. 3/4" x 5-1/2" (19mm x 140mm) Lower Pine
5. Solid Blocking at Doorway
6. 25/32" (20mm) MFMA Maple Flooring
7. 1/4" (6mm) Resilient Foam Blanket
8. Vapor Retarder

EQUIPMENT



1. Floor Plate
2. 1 1/2" (38mm) Min. Expansion Space Required at all Insert & Electrical Penetrations
3. Concrete Floor Penetration
4. Solid Blocking at Insert Penetration

Certified



Green Status and LEED Contributors



- FSC® Certified Maple - MR
- FSC® Certified Subfloor Components - MR
- Environmental Quality - EQ
- Regional Materials - MR

Resilience

1/4" Performance Foam
*Other pad options available

Slab Depression

- 25/32" (20mm) flooring - 2-1/4" (57mm)

Optional ScissorLoc™ Systems

ScissorLoc™ I
ScissorLoc™ II
ScissorLoc™ III

Optional Protection System

PowerVent™ Airflow System

Subfloor Construction

Intersecting Kiln-dried Solid Pine

System Type

Floating

Testing Laboratory



U.S. Patent #

#5,299,401

It is the policy of Infinity Wood Floors to continuously improve its line of products. Therefore, Infinity Wood Floors reserves the right to change, modify or discontinue systems, specifications and accessories of all products at any time without notice or obligation to purchaser.



see us at
Sweets.com



Jan 2023